



# 2020 Catalog Idea<sup>&</sup> Book for Drills



**No-till  
Farming for  
a Brighter  
Future**



**NEW  
PRODUCTS!**  
See pp: 5, 6,  
10, 12, 18.

**Master  
Top Yields & Profits  
(and stop wasting seed)**

# Exapta—committed to your success

Exapta Solutions was created by farmers and agronomists to fulfill a need for better seeding technology and methods. Our products and educational efforts are brought to you by the people who live in your industry every day.

Exapta relies on the necessity-driven innovation of many farmers & researchers to find solutions for high-performance planting and production. To this day, Exapta's forte is understanding how plants grow, and how the no-till seed-installation process can be more effectively accomplished. We strive not to sell you some device, but to provide useful information to help you get the most from your seeding equipment—more acres, better emergence, higher yield, and greater profit. Once armed with knowledge, we hope you'll see the value and wisdom of our products.



Matt Hagny's primary occupation for the past 25 years was crop consulting for no-till. Long before he founded Exapta Solutions, he was convinced of the value of low-disturbance no-till, and the need for accomplishing seed firming and furrow closing as discrete steps.

Matt passed away August 24, 2019. He was the life and blood of Exapta and will be tremendously missed. His knowledge and expertise immensely impacted many producers worldwide. Matt was also an incredible teacher, sharing his vast knowledge and resources with the Exapta team. Exapta is devoted to continuing to pass on our no-till expertise.

At Exapta Solutions, we strive to be your Number One source for top-shelf no-till seeding products and information. Thus, we'd like to share our 2020 Idea Book & Catalog which we hope you'll find filled with useful thoughts, and a resource you'll eagerly consult on your journey to still greater seeding success.

For more tips and tricks,  
plus agronomy insights  
sign up for our free  
newsletters at  
[exapta.com/newsletters](https://exapta.com/newsletters)



Leah Lanie  
Chief of Operations  
[leah.lanie@exapta.com](mailto:leah.lanie@exapta.com)



Dale Nuss  
Sales & Service  
[dale.nuss@exapta.com](mailto:dale.nuss@exapta.com)



Ethan Begle  
Sales & Service  
[ethan.begle@exapta.com](mailto:ethan.begle@exapta.com)



Robbyn Anglin  
Warehouse Manager



Emilie Hagny Downs  
Owner



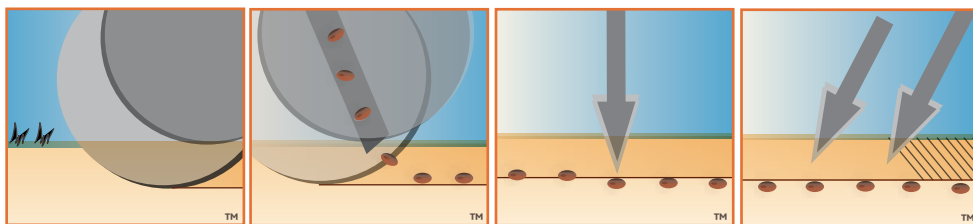
"I appreciate everything you and the Exapta guys do for us as we try to keep moving forward in no-till while fighting machinery that is still largely being designed for conventional or minimum-till."

Dietrich Kastens, Herndon, KS.

# Fundamentals of seed placement



Profits inside—install with care



**1** Cut residue & soil to create the furrow of the proper depth™

**2** Place the seeds consistently into the bottom of the furrow™

**3** Firm the seeds by applying the right amount of pressure exactly where it's needed™

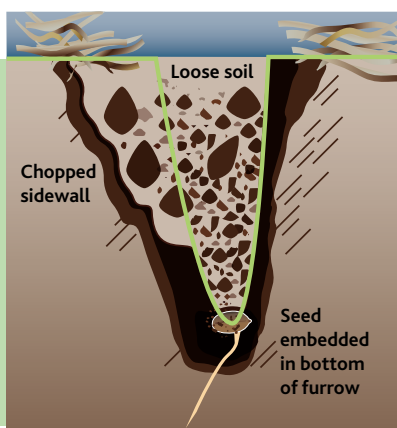
**4** Close the furrow by chopping the sidewall, to prevent drying and allow good root exploration™

**Vigorous crops depend on you.** In addition to controlling depth and spacing, *your seeding equipment determines the uniformity of seed-to-soil contact and the condition of the soil placed over the seed.* These influence the rate of air and water exchange during germination and early growth, as well as the resistance the seedling encounters during emergence and while developing roots.

**Emergence, early growth, yield, and profit all hinge on proper seed placement—**seeds are pressed (embedded) into the moist furrow bottom at a consistent depth, and the furrow sidewalls are shattered to cover seeds uniformly with loose fractured soil. With the seed securely firmed into the surrounding soil, it draws moisture easily for germination and establishment. Loose materials above the seed allows rapid emergence, higher percent establishment, and better rooting. Mulch cover prevents drying out of the seed zone prematurely. **The Exapta No-till Planting System accomplishes these things most effectively.**

Read more by visiting [www.exapta.com/working-knowledge/no-till-seed-placement](http://www.exapta.com/working-knowledge/no-till-seed-placement)

*Perfect seed placement in no-till. Loose material over the seed is easily brushed away to reveal the seed embedded in the bottom of the furrow. The sidewall created by the opener blade has been chopped by the closing wheel, but the bottom of the furrow is undisturbed. John Deere 50/60/90 drill with a well-designed spoked closing wheel.*



## Tech tips for gauge-wheel drills:

Some drill opener designs cannot adequately perform Steps 1–4 (see page 3) because they are hangovers from the tillage era. One design that fulfills Steps 1, 2, 3, & 4 is the John Deere 50, 60, 90 & Pro-series single-disc, gauge-wheel opener. Some comments to help them function:

**Step 1, Cut:** Opener blades should be replaced when they've lost 5/8" off of original diameter (bevel is too shallow and the blade is dull by this point). Because the boot is wider than the furrow being cut (except Pro-series), **it is very difficult to push the boot into the soil**. Generally, the lower edge of the boot should be approximately at the soil surface (Pro-series can run below the surface, which is a good thing. Note, however, they may plug with oats or garbanzos due to narrower channel). Replacing blades frequently cuts down on boot wear. Maintain the big pin & bushings at front of opener to prevent furrow from getting too narrow.

**Step 2, Place:** Seed boots should be inspected and maintained—the wear is not obvious from casual inspection. When the bottom outside edge of the boot is no longer straight across, performance is seriously compromised (see photo). The **60-series drills** had a poorly designed seed boot and **should be upgraded to the 90-series boot**. Maintain leaf springs to keep the boot against the blade. Leaf springs weaken with age, and eventually break.

If boot attachment hole becomes too worn, boot drags out of position, causing more seeds to bounce out of the furrow. There are several attachment-hole repair kits on the market (avoid repair kits that don't let boots set flush and cause major plugging problems). Aricks shoulder bolts for JD 60/90 boot repair eliminate slop in the boot attachment. Upgrade to **Ninja seed bounce flaps** on back of boot: These help keep seeds in the furrow bottom.

The gauge wheel should be firmly on the soil surface during seeding, which **holds the sidewall together while the blade exits the soil**. Also, for this reason, Reduced Inner Diameter (indented) gauge tires can adversely affect seed placement. Air drills especially may require additional frame ballast (sometimes a lot). Read more at: [www.exapta.com/working-knowledge/tech-tips-for-drills](http://www.exapta.com/working-knowledge/tech-tips-for-drills).

**Step 3, Firm:** Use a **good seed-lock wheel**, preferably a narrow, semi-flexible urethane wheel. A flexible wheel self-aligns for consistently good performance. (The JD firming wheel runs on a rigid, overly wide rim.) Properly shaped firming devices will engage all the seeds and push them securely into the bottom of the furrow, without the firming device getting hung up on the sidewall.

**Step 4, Close:** **Close the furrow** by shattering the sidewall and pulling loose material into the furrow. Avoid packing soil above the seed.



*Inadequate down-pressure causes shallow furrows and more misplaced seeds. The only meaningful indicator of down-pressure is compression of the big coil spring.*

For more on this topic & others,  
read Exapta's newsletters.

[exapta.com/newsletters](http://exapta.com/newsletters)  
[exapta.com/working-knowledge/  
tech-tips-for-drills](http://exapta.com/working-knowledge/tech-tips-for-drills)



# Opener blades: JD 50/60/90/Pro-series and now P-500/NH 2080:

Deeper bevel (3/4") vs others (5/8")  
 Sharper, Stronger, Proven Technology  
 20 – 30% more wear-life



Perhaps because of the light we shed on the matter, JD and some aftermarket companies have improved their game with higher quality offerings. We have too, with the **Forges de Niaux 200**—which is even stronger and has 20 – 30% more wear-life than the next-best—our old standby, the Ingersolls. The general hierarchy for wear-life, sharpness, and quality/consistency is Niaux 200 > Ingersoll ≥ Bellota (JD since 2016) > Osmundson (JD 2015 & prior). The Forges de Niaux truly takes it to the next level. Exapta brings you the best of the best.

"I am very happy with these. We run across 5000 acres on average a year. I could never get entirely through the year with JD or Ingersoll blades, but with the Forges de Niaux (FDN) blades I can get another 500-1000 acres. We have such hard rocks and soil that we run across, so it's really hard to keep disc up-to-par. With the FDN openers we can actually make it through the season and then some."

Corey Schumacher, Napoleon, ND • Exapta customer since 2018  
 (Forges de Niaux blades on 42ft on 10" JD 1895 drill)

<b>Forges de Niaux 200 blade for JD 50/60/90/Pro drills</b>	<b>\$34.87</b>	<b>NEW</b>
<b>Forges de Niaux 200 blade for CIH P-500/NH2080</b>	<b>\$33.17</b>	
<i>Forges de Niaux blades available for other drills – call for pricing!</i>		
<b>Ingersoll (Canada) opener blade, JD 50/60/90/Pro drills</b>	<b>\$28.00</b>	<b>CLOSE OUT</b>

## FARMFLEX Gauge Wheels

20 – 80% longer life • Improved bearing protection  
 Super-rugged rim and hub • Semi-pneumatic, and pliable  
 Self-cleaning • No more punctures



OCTICO FARMFLEX proves 20 – 80% longer life than OEM. These gauge tires are semi-pneumatic, and pliable compared to some of the rock-hard ones on the market (more sidewall compaction). Super-rugged rim and hub. Available in 4.5" and 3" widths. **All the benefits of MudSmiths but with a lower price!**

Their open-rim design has proven to be excellent for shedding mud. The rubber in FARMFLEX tires is thicker and lasts longer than other brands, yet they still have a softness or pliability to cushion the soil (unlike some brands that are rubber but have little or no air cavity, and are hard as a rock). Fits bolt-thru types. Gauge-wheel drills, such as JD's 50/60/90/Pro, Case's PD-500, New Holland's P-2080/2085, and Case' SDX, use bolt-thru type bearings.



Unique Cup and Cap Design! Improves ball bearing protection thus sealing it from dust in the field; from rain water and mud.

<b>FARMFLEX gauge wheels, 4.5" and 3" widths</b>	<b>\$125.00</b>	<b>NEW</b>
<i>Available in September – limited supply! Preorder now for early 2021 delivery!</i>		

# Leaf Springs for Seed Boots JD 50/60/90

- Less breakage for longer service life
- Maintains strength

For the seed boot on JD 50, 60 & 90-series NT drills. Manufactured to Exapta's high-quality specs. Special ultra-durable paint process prevents rust. 60-series boots require spring to be trimmed.



Leaf Spring for seed boot on JD 50/60/90 drills

\$5.25

## Aricks seed boot for JD 90-series drills

**Best fix for eliminating boot slop**  
**Extended wear: high-quality chrome alloy**  
**Easy installation • No need for drilling or bushings**



For proper seed placement inspect your drill for up/down slop in the seed boot attachment point. Even on a brand-new drill, this play is excessive and should be reduced (note that you don't want to eliminate all movement—there needs to be a little for the boot to align flush with the blade, and to let straw clear out).

The Aricks seed boot uses a specially designed shoulder-bolt, to eliminate the problematic vertical slop in the attachment holes. The shoulder bolt transfers the pivot from the worn holes in the arm to the shoulder, cutting the up/down movement to 1/8". Aricks seed boots are genuine extended wear and manufactured to last using a high-quality chrome alloy.



*As evident in the photo, above and left, movement in the boot attachment can be very damaging to structural components and parts on your machine. Aricks seed boot and shoulder-bolt eliminates this unwanted movement, preserving the integrity of the structural components of the drill, while maintaining accurate seed placement.*

"Way easier than drilling and putting bushings in! Way better design."



Jason Federer, Walcott IN • Exapta customer since 2019 (Aricks seed boots on JD 1560)

"I hated to modify the OEM design by drilling the arms and installing bushings. I really like the shoulder bolt design."

Brian Kruer, Greenville IN • Exapta customer since 2019 (Aricks seed boots on JD 1560)

### Aricks seed boot for JD 90-series drills

\$125.00

*Includes shoulder bolt. Also fits 60-series if seed tubes are updated. **Preorder today!***

### Aricks shoulder bolts for JD 60/90 seed-boot repair

\$12.00

*Clamps tight against shank ears; boot swivels on bolt. Eliminates slop in boot attachment for better seed placement. Requires drilling out existing boot mounting holes.*





# NINJA™

Seed Bounce Flap

**Forward-bending flap keeps more seed in the furrow**

**For 50 & 90-series drill boots • Flexible**

**Doesn't break off • At least 5x wear life vs others**

## Ninja seed-bounce flap for JD 50 & 90 drill boots:

The flap on the seed boot is what keeps seeds from bouncing out of the furrow, and this is even more critical on air drills, since the air stream is also trying to escape and may carry seeds along with it. However, JD & aftermarket flap suppliers use a straight flap, made from materials that are too stiff—often breaking or warping up. **The issue with straight flaps is that it leaves a triangular gap (see photo) for seeds to escape**, and this gap gets larger when the straight flaps bend upward during use, due to riding on the sidewall.

Our Ninja flap has a 20-degree forward bend to help close this gap, thus keeping more seeds in the furrow. The forward bend helps deflect seeds downward into the furrow bottom before dust and chunks of sidewall fall in ahead of the seed. The flexible material and tapered end **prevent the Ninja flap from riding on the sidewall**. The result is better seed placement. Ninjas also shed mud better than OEM and competitors, and **proven to outlast any other flap/tab by at least 5x**.

We are setting the record straight on seed bounce flaps with our 20-degree forward bend and a tab that outlasts all the rest! **Watch the videos at [www.exapta.com/products/ninja](http://www.exapta.com/products/ninja)**



Gap with OEM flap



Ninja: down, forward, no gap



Ninja vs Bonilla  
Same drill, same time, adjacent openers

“Ninja seed flaps are great. I put half Ninjas and half [competitor’s] on to start the 2015 season. Probably did about 3,500+ acres that year with a 30’ drill. **The [competitor’s] get pretty worn after a couple hundred acres, but I left them on all year for the PITA factor.**” Feb 2019 update: **“My Ninjas now have nearly 13,000 acres on them and are in real good shape yet.”**



Jordan Reimnitz, Armour, SD

Exapta customer since 2009 (JD 1860 w/ 90-series boots)

**“The Ninjas hardly wore at all. They fit down in the furrow so much better than other flaps on the market. I really appreciate what you guys are doing for the farmer.”**

Ed Meng, Oregon, MO • Exapta customer since '08 (Ninjas on JD 750)

**“The Ninjas still don’t show any signs of wear after 4 seasons and 24,000 acres between the two drills.”**



Roger Neshem, Berthold, ND  
Exapta customer since 2012  
(Ninjas, DuraLoks & T-whls on 40' & 60' JD 1890s)

**“The Ninja seed bounce flaps put the seed at the bottom of the trench better than the other flaps available. I’ve ran OEM and competitor brands, but the Ninja is the best. I have been impressed to say the least.”**

Ken Gardner, Williston, ND • Exapta customer since 2017  
(Ninja seed bounce flaps on JD 1890)

**Ninja™ flexible seed-bounce flap for JD 50 & 90 drill boots**

**\$5.68**



# DuraLok™ seed-lock wheel



## DuraLok™ for JD 50/60/90/Pro-series drills

Superior firming • Easier furrow closing

Stays clean vs others

**Not too narrow, not too wide, not too rigid, not too soft, but just right.**

**Narrower to fit the furrow better • Easily replaceable bearing**

**Highly wear-resistant material • 'Tire' won't pull out of the rim**

Narrower to provide more consistent seed-to-soil contact. (Wider firming wheels also pack the sidewalls more, making the furrow harder to close.) Flexible to self-align during slight turns or when drill is drafting downhill. Tremendous wear life.

The sleek shape of the DuraLok™ allows it to stay clean\* when OEM and competitor (aftermarket) firming wheels are clogging with mud, pulling seeds out, and dragging against the gauge wheel. (\*Depends on soil type.) Now with UV-resistance to hold a bright yellow color for many years. [Since 2018, we now use the exact same Peer bearing that JD uses in 90-series firming wheels.](#)

"Get the DuraLok from Exapta. That puppy sheds mud and won't cause plugging issues like OEM when it's sticky and wet out. Those DuraLoks flat out work—an excellent product. Try one and you'll see what I mean."



Roger Neshem, Berthold, ND  
Exapta customer since 2012 (DuraLoks,  
T-whls on 60-ft & 40-ft JD 1890s)

"I highly recommend to pull off the JD wheels and put DuraLoks on. They are **thin enough to fit perfectly in the seed 'v'** and have flexibility. I've never seen mud buildup on them either."



John Heermann, Haxtun, CO  
Exapta customer since 2015  
(JD 1890 drill)



*A great many of our customers report that no other seed-lock wheel even comes close to staying as clean as the DuraLok. We'll keep you running when all the others are clogged up.*

**DuraLok seed-lock wheel** also fits Case SDX

**\$55.00**





**Aggressive furrow closing with self-limiting depth**  
**Creates ideal zone for crop emergence & rooting**  
**Doesn't overpack**  
**Heavy-duty bearing with 5-yr guarantee**  
**Military-grade armor plating for even longer wear life**

Thompson closing wheels are an excellent upgrade for JD 50/60/90/Pro-series drills, and bolt easily onto the original closing arms. The OEM 50/60/90 cast closing wheels on the Deere drills have a **ridiculous tendency to hop** because of their weight and smoothness, and the angle of the arm's pivoting, and really hammer the soil when they land after being airborne. Even when running smoothly with low spring pressure, heavy cast closing wheels tend to **seriously over-pack the soil**, reducing emergence and early growth. Thompson wheels completely avoid the problem, since they weigh far less than JD and certain aftermarket wheels, and actively pull themselves into the soil.

Also, the Thompson wheel has **proven durability**: High-carbon steel, a truly robust bearing with a triple-lip seal, and our exclusive steel shroud for superior bearing protection—plus, our **5-year warranty on the bearing**.

"Thompson wheels should come standard on the drill. We plant thru grass and really heavy straw and the T-wheels never wrap or collect residue. I was worried planting thru the residue and stubble, but these wheels worked tremendously well. They've made my drill!"

Ron Gossett, Sardinia, OH • Exapta customer since '08  
(Thompson wheels on John Deere 1590 drill)

"Based on the effectiveness on the Thompson wheel, I had the best stand of soybeans with my JD 750 drill that I've ever had. And, I never had to change a bearing! I used to spend the majority of my time changing out bearings on the old cast iron wheels. Not this year. Even planting in our extreme wet conditions this spring, I had moderate to very little problems closing the trench. The T-whls did the job: closed the furrow beautifully. I think they even worked better in my double-crop soybeans."

Comparing aftermarket spoked closing wheels: "As I get into more moist soils and heavier/bigger residue, the Thompson wheel is the only one to accomplish the job. The stock JD wheels bounce terribly, and try to smash the seed trench closed, so furrow closing is poor. The [competitor spoked wheel] is an improvement since it has dimples instead of being round like the stock wheel. Bounces less and does a better job of crumbling instead of smashing, but still smashes—much better furrow closing versus the stock wheel but still leaves furrow unclosed some. The Thompson because it's thinner and more aggressive, crumbles the furrow closed and I don't notice bouncing or the furrow being left unclosed.... I would never run the current version of the JD stock wheels again. I'm also confident that I would buy Thompsons only next go 'round."



Steve Isaacson, Cecilton, MD  
Exapta customer since 2014  
(T-whls on JD 750 drill)



Josh Lloyd, Oak Hill, KS • Exapta customer since '05 (Thompson wheels on one rank of JD 1890 air drill)

**Thompson wheel T4z**  
(with stub shaft, for JD 60, 90 & Pro-series drills)  
'z' = Tougher than ever, made from military-grade armor plate

**\$83.00**

**Thompson wheel T2z & T3z**  
(with 5/8" bolt or metric spindle, for JD 50-series, Case SDX, P500 & NH2080)

**\$136.00**

**Better  
than  
Ever!**

# Aricks row cleaners for JD 50/60/90/Pro drills

- Dramatically reduced hairpinning
- Minimal soil disturbance
- More consistent seed placement
- Great for shallow seeding or heavy mulch
- No waiting for straw to dry
- Proven: 11-year track record in Australia
- Extremely robust design



Sharktooth is trademark of Yetter

Another top-notch product from Aricks of Australia, where ruggedness is taken to an extreme: These row cleaners have a proven, 11-year track record, and we're proud to be the exclusive distributor in N. America. Now with Sharktooth™ wheels for more controlled cleaning action and less chance of wrapping.

While sharper opener blades and seeding only when the mulch is dry can take you a long way in preventing hairpinning (as can our UniForce hydraulic downforce system), a row cleaner helps you out if the mulch is simply too thick to cut, or waiting for it to dry isn't practical. Also, in very cold climates, a bit of soil warming from clearing some mulch out of the row can be beneficial.

Aricks row cleaners are also a big advantage when seeding very shallow, such as alfalfa or canola, where it's difficult to make the opener blades cut the straw (18-inch blades cut best when seeding 2.5 – 3" deep). Marginal in heavy or tall corn stalks (Corn Belt or irrigated). They do handle hemp, field pea, soybean, faba bean and flax straw without much issue, as well as stripper-harvested cereals. A jacker bolt allows control of max down-stroke. When not needed, the wheel is easily locked up.

"I've had them on my 1895 for 7 or 8 years, covering 40,000 – 50,000 acres. They work. I couldn't imagine not having them. They extend the number of days we can work—we can get on soft fields sooner [when cutting would be a problem]. We can also start earlier each morning and go later in the evening.... I'm impressed the condition they are in after so many acres."



Robert Stevenson, Kenton, Manitoba • Exapta customer since '07 (Aricks row cleaners & T-whls on both seed ranks of 43-ft JD 1895)

"We like them very much. We farm irrigated land and deal with heavy residue. The row cleaners enabled us to avoid all pre-seeding tillage which was an economic benefit as well as a benefit to our soil."

Ty Sears, Lethbridge, Alberta  
Exapta customer since 2019  
(72 Aricks cleaners on 60' 1895)

"The Aricks row cleaners did a tremendous job with clearing away the residue, especially in wetter conditions. After installing the row cleaners, there was night-and-day difference in hairpinning. I was amazed how much we reduced hairpinning and in the conditions we were seeding through (wetter). Typically when it's early or late in the day, you'll get more hairpinning — but we were able to keep going. We planted canning peas into soybean stubble — our stands are the most consistent and best stands we've ever seen in no-till."

Andrew Endres, Hampton, MN • Exapta customer since 2015 (15 ft, 7.5" JD 750 —row cleaners on all 24 openers)



Aricks  
Australia  
drops  
prices!

Financing Available 6.75% APR, 24 months. Offer good thru 9/30/2020

Aricks row cleaner for JD 50/60/90/Pro drills

\$525.00

10-week lead time for delivery. Note: Box drills require installation of a bar ahead of each rockshaft (call us for prints and weld-on pieces to build your own). 50-series requires different model.

# Aricks Bushing Kits

Keeping the firming & closing arm pivots working properly can be a real hassle on the JD 50/60/90 drills. Even after Deere upgraded them circa '09 to include seals, they still have a habit of packing full of dirt and not taking grease. But with the Aricks bushing kits from Australia, these pivots will run smoothly and **you'll never have to grease them again!** The Aricks seals for the firming & closing pivots have a Teflon coating on the seal contact lip and are **designed to run dry**, unlike a competitor product from USA—and these Aricks kits have an **9-year track record** to prove their durability and trouble-free nature. The bushings themselves are fiber-wound Teflon impregnated, and the steel sleeve has a hardened chrome finish, for smooth action, and proven to last at least as long as OEM (significantly longer in some conditions). These kits are hugely popular in Australia.

*\*Note: On 50-series (except earliest 750s), the firming arm has a pin welded in—this must be removed and a hole drilled in the arm at that spot, and requires a 50-series bushing kit as the sleeve length is longer than the 60/90-series.*



Aricks firming arm kit (sleeve, bushings, seals) JD 50*/60/90	\$42.00
Aricks closing arm kit (sleeve, bushings, seals) JD 50*/60/90	\$42.00
Special washer and nut, closing rebuild (both grade 8)	\$4.68
Install tool for firming & closing kits	\$15.00
Removal tool for firming & closing kits	\$15.00



The main pin & bushings at the front of the opener on JD 50/60/90 drills (where the arm attaches to the rockshaft) is another wear item, and it's critical to maintain furrow width. If these get sloppy, the furrow gets narrower and the boot and firming wheel no longer fit, and seed placement is awful. Aricks' front pin kits have been in the field for 6 years, and proven to last at least as long as OEM, sometimes significantly longer. Aricks front pin bushings are steel with a Teflon inner layer, and the pin has a hard chrome finish.

"The only greaseless bushing I know of that can be used on the closing joint that does not shift. Worry free maintenance. Equal and beyond longevity to OEM. I've been installing these bushings for 3 years and haven't yet had a call to come out and replace any."



Ross Hack, Kansas Air Seeder Service

Aricks main opener pin kit (pin, bushings)	\$36.00
Removal tool for main-pin bushings	\$45.00

# Aricks Non-greasing Gauge Wheel Axle Kit

**Makes your disc opener greaseless**  
**Axles won't seize • Holds cast arms tight**

The gauge wheel axle kit from Aricks is the final piece in making your disc opener completely non-greasable! The gauge wheel depth adjustment, via the axle rotation, is a common point for seizing on the JD 90 and Pro-series openers. In dry, dusty conditions, grease and dirt pack together, becoming rock-hard, inhibiting rotation of the axle and rendering the depth adjustment arm useless. *These new axles won't seize, allowing for smooth operation of the depth adjustment arm.*

Farmers face enormous difficulties trying to unseize their axles in order to adjust seed depth. Most resort to removing the entire disc opener and placing it in a hydraulic press to force out the seized axles.

Another issue is once these cast arms get a little movement in the connection to the gauge wheel axle, it is very difficult to keep them tight. Now those *worn cast arms, combined with a new Aricks axle, will never become loose again.* Sold as a kit to give you maximum flexibility in replacing several components at once.

Aricks uses high quality bushing material in the axle spindle and an extremely effective, durable seal to keep the axle shaft dust-free and running smoothly for many acres to come. The solid axle shaft attachment point has been beefed up for greater surface contact, allowing you to reuse the worn depth adjustment arms, for even more savings.

*Note: Very limited supply; fully stocked in December 2020.*



*Aricks' depth adjustment axle*



*Gauge Wheel Axle Kit complete with axle, spindle and seal.*



*No need to replace worn depth adjustment arms with the new solid axle shaft from Aricks.*



*Limited supply; fully stocked Dec 2020.*

## Aricks Heavy-duty Cover Plates & 'T' Handles

**Solid straight lugs won't wear/break like OEM pins**  
**2x thickness of OEM • 'T' handle won't stick or jam**  
**Straight-across depth selection for easy adjusting**  
**Same depth increments as OEM**

A durable, logical replacement for the light-duty, inferior criss-cross depth adjuster that rattles and wears out. The robust new cover plate and 'T' handle from Aricks improves reliability and reduces maintenance costs. A much-needed redesign of the traditional diagonal slotting for a simpler, heavy-duty system that will withstand tough conditions better than the OEM.



**Aricks Non-greasing Gauge Wheel Axle, right or left**  
**Aricks Heavy-duty Cover Plates**  
**Aricks Heavy-duty 'T' Handles**

**\$180.00**  
**\$30.00**  
**\$30.00**

**NEW**



# Case P-500 Upgrades

## Mojo Wires for drill Keetons

Most grain drills (except JD 50/60/90s, and some SDX drills) completely lack an *in-furrow* seed-firming mechanism to apply a small but consistent pressure directly onto the seed *at the seed's location* in the bottom of the furrow. Instead, these drills use **trailing packer** or **'press' wheels** that run on the soil surface to compress all the soil above the seed **to try to obtain sufficient seed/soil contact**. As with planters, this method is problematic in the more structured soils of no-till cropping, and often causes **mediocre to poor emergence** if it doesn't rain right away. Hence, many farmers install Keetons on these drills, which help, but often don't have enough pressure.



Keetons + Mojos greatly enhance Case's Precision-500 drill performance.

So we've adapted our highly successful Mojo Wire to fit Keetons for grain drills (the Mojo does require a specially milled Ktn tail from Exapta). By **applying 2x to 5x more pressure onto the Keeton** with the Mojo, the Keeton will wear out faster—but at least it's doing some good at that point! It's important to do consistent seed firming *at the seed's location*—and sometimes this is the difference between achieving a decent stand, or not.

The Mojo Wires are **compatible with the liquid feature** of these drill Keetons,\* although the liquid tubing is routed behind the upper receiver, instead of inside. See page 20 for more details.

## Improved Closing Action with Thompson Wheels

The closing action on the **Case Precision 500 / New Holland P-2080** is rather pitiful in long-term no-till with their smooth packer wheel. Exapta's closing bracket is the ideal upgrade in allowing our Thompson T3z to be ran at a 7-degree toe-out, along with lighter spring pressure. **Avoid stand failures! Do firming & closing as separate steps, and do them well.** (T-whls are also a good option for Case SDX drills with seed-lock wheels installed.)



"Overall, your products did a great job. I'm satisfied that I installed Exapta's complete row upgrade [Keetons, Mojos, T-whls]. We probably had the best stands I've seen in a while."

Jason Stoffer, Abilene, KS • Exapta customer since 2015 (Exapta's complete firming and closing upgrade on Case P-500 air drill)



<b>Keetons for drills (and GP twin-row planters)</b>	<b>\$27.50 – 35.50</b>
<i>Depending on drill brand/model (some contain extra hardware). See page 20 for details</i>	
<b>Mojo for drill Keeton</b>	<b>\$13.00</b>
<i>Requires specially-milled Keeton by Exapta, see page 20 for details</i>	
<b>Steel bracket for Keeton on Case P-500/NH 2080 drill</b>	<b>\$10.75 ea</b>
<b>Bracket kit for T-wheels, Case P-500/NH 2080 drill</b>	<b>\$78.00</b>
<i>See p 21 for more info.</i>	



# UniForce™

## Hydraulic Downpressure

**Get your JD 50/60/90/Pro-series drill to work the way it should.**

**Uniform pressure on all openers • Reduce/eliminate hairpinning • Less sidewall compaction**

**Get consistent depth! • Better use of frame weight • Less frame stress**

**Greater up/down travel on openers • 3-year warranty on cylinders** *(some restrictions apply)*

The biggest downfall of the JD 50/60/90/Pro-series drills is how down-force is applied—the rockshaft twists to compress a big coil spring on each opener. Because the spring is nearly parallel to the arm, the opener has almost no down-stroke—i.e., the spring is applying the correct amount of down-force for only about 1/4" of its range. Had the spring been oriented differently, the problem wouldn't be nearly so bad.



US Patents Pending: US Patent No 9,930,822

So, you must have fields that are laser level for these openers to work correctly. Even 1/2" depressions give them fits. The spring starts to relax as the opener goes into these miniscule depressions, and you lose down-force—the opener loses depth, and starts hairpinning. To compensate, everyone cranks the pressure way up—so that the majority of openers have far too much pressure, just to keep those passing thru mild depressions working halfway decent. You end up with excessive sidewall compaction on most of the rows, while some aren't even holding depth. Not to mention it takes a bunch of extra ballast on the frame.

"Before installing UniForce the drill openers looked like a piano board being played. Now that UniForce is installed, it is amazing to see how no opener bounce occurs. The entire drill has consistent down-pressure, giving us uniform depth. We are now obtaining what we set out to accomplish." [2019 update] **"Since adding UniForce, I've been able to reduce my soybean seed population from 165,000 to 140,000, so a savings of 25,000/acre. This saves me about \$8/acre."**



David Hoar, Campbellsburg, IN  
Exapta customer since 2016 (43-ft  
JD Single rank 1690 CCS, 32 openers  
on 15" spacing)

**"In marginally dry conditions, it's a big advantage. The row units hold depth better—it's impressive to look back there and see the row units not bouncing [like they would with OEM springs]."**



Scott Arthaud, Keyes, OK  
Exapta customer since '07  
(UniForce, T-whls on 60-ft JD 1890)

**"The openers run a lot smoother and they don't bounce around like they used to [before installing UniForce]. Seed placement is definitely better, therefore obviously emergence is better. We have faced a couple drier years than normal, but I've been quite surprised with some of the yields!"**



Glen Sebok, Taber, Alberta  
Exapta customer since 2012  
(UniForce on two 43-ft JD 1895s)

**Choose 0%  
financing for  
24 months, or  
6.5% cash  
rebate.**

**UniForce hydraulic down-pressure system**

**\$380/row (60/90/Pro), or  
\$405/row (50-series)**

**plus base price: box drills pulled individually**

**\$2,450**

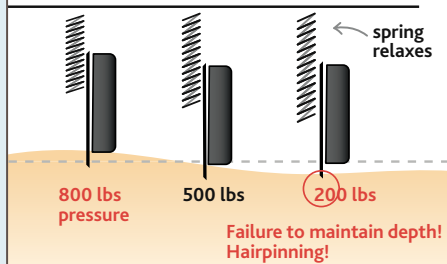
**all single-rank (15") CCS drills**

**\$4,180**

**other air drills or 2 box drills pulled together**

**\$7,380**

## The Trouble with OEM Springs



UniForce cylinders are made from top-quality materials and have extra packing rings for a very long life.

Our UniForce hydraulic system fixes Deere's design debacle. Now, you can get uniform pressure on every single opener throughout its full stroke. The result is much better cutting, less hairpinning, holding blade depth much more accurately, less premature sidewall blowout (from gauge wheel not being firmly on the soil surface), and far less sidewall compaction. Another problem with springs is that they bounce: Hydraulics don't have this problem. *Drive faster and greatly improve precision of placement.*



UniForce uses single-action cylinders along with the OEM rockshaft, which is still used to raise and lower the openers. Both can run on a single tractor remote, or they can be kept entirely separate.

Large 3/4" header hoses\* allow oil to move quickly from one end of the drill to the other, and between the front & back ranks. This keeps pressure almost perfectly constant even while going over steep terraces or through swales at high speed. Special brackets support the header hose on most air drill sections. Large 1/2" drop hoses let oil move in & out of cylinders very rapidly. But don't be fooled by the size of the hoses: The flow requirements are relatively low—for 48 rows, the UniForce takes only 4 GPM (for comparison, the air cart fan needs 25 GPM). (\*Box drills use 1/2" header hoses.)

"We are very pleased with the UniForce system. We noticed **our openers run a lot smoother** through the ground, and no longer bounce as much. **The seed placement is excellent, and emergence has never been better** than the last two years. It's especially impressive with small-seeded crops. **All plants emerge at the same time, and we see that right through to harvest with very even maturity.** We have just experienced two drought years in a row. This past year [2018] was the worst in 18 years. **With the Exapta system (UniForce, Thompson wheels, DuraLoks, Ninjas, Ingersolls) on our drills, we seem to be seeing some yield advantage at harvest time.**"



Chet Dykshoorn, Foremost, Alberta • Exapta customer since 2012 (UniForce, etc on two 42' JD 1895s)



For farming over terraces, especially when using only a single rank of openers, Exapta offers an optional 2.5-gallon accumulator for UniForce on air drills. For 2 box drills together on a hitch in terraces, we have 1-gallon accumulators (one for each drill). When hitting terraces square-on (angle isn't a problem), even the highest-capacity tractors can't supply enough oil flow to keep the pressure perfectly constant, but our accumulator helps minimize fluctuations.

Optional Accumulator, 2.5 gallon

\$3,250.00

Optional Accumulators, pair of 1-gallon *with brackets, hoses, fittings*

\$4,400.00

In-cab adjustment *see p 16 for details*

## Options for Hydraulic Down-Force



*Motorized control valve for in-cab adjustment of any\* hydraulic system including JD OEM.*

**Want to change pressure on-the-go?** For example, lightening the pressure in soft areas on each pass, or cranking it up in hard areas. Our in-cab manual control switch works great **for the OEM rockshaft downforce** on JD 50/60/90/Pro-series drills & 2510H applicators, as well as Exapta's UniForce down-pressure system (see pp 14 – 15). The switch activates a motorized control valve that simply screws into the valve block in place of the knob.

<b>In-cab adjustment for hydraulic systems: UniForce (all)</b>	<b>\$650.00 – \$890.00</b>
<b>JD box drills &amp; 3-section* air drills (w/o UniForce)</b>	<b>\$890.00</b>
<i>(includes motorized control valve, wiring harnesses, switch box)</i>	
<i>*Not available for John Deere 5-section air drills with OEM downforce</i>	

## Hydraulic oil overheating from air drill?

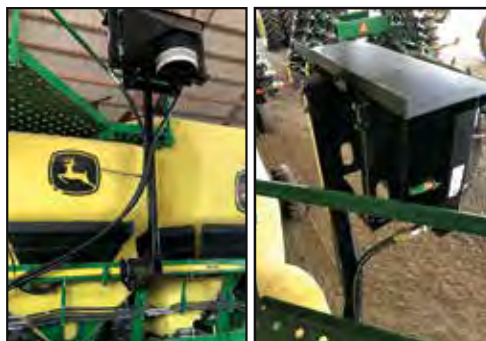
Even if it's not overheating to the extent of shutting down the tractor, high temps break down hydraulic oil faster, and shorten the life of pumps, seals, etc. — you really want it to stay below 185 F. Here are some ways to keep hydraulic oil cool.

First, re-route the fan return for certain cart makes/models (see our newsletter on this [exapta.com/newsletters](http://exapta.com/newsletters)).

**For a robust “heat exchanger” that’s designed specifically for this, check out our Smallaire unit.** With a flexible duct that connects to the fan intake, it fits most air cart models, and allows the unit to be mounted anywhere on the drill (higher up prevents it from sucking in as much dust and chaff). Don't get sidelined with hot oil!

“All in all, the Heat Exchanger did its job. It was noticeably warmer, drier air running through the system. Last year, some farmers had to stop seeding at times in the hot conditions due to hydraulic oil overheating, whereas I was able to keep going, even with an older tractor.”

Greg Morrical, Beverly, KS • Exapta customer since '07 (Exapta Smallaire Heat Exchanger on JD 1910 air cart)



*Exapta's Smallaire Heat Exchanger is designed by air movement specialists and has a proven track-record. When cleanout is needed, there's easy access with the hinged cover. The Smallaire unit has a huge radiator (24" x 28", and extra thick), and a plenum to utilize the full extent of the radiator area, so you get maximum cooling of oil and maximum warming of air in the system — great for tough conditions. (Ducting not yet installed in photos.)*



*Smallaire Heat Exchanger mounted on a SeedHawk using flexible ductwork. Usually, the heat exchanger is mounted in a convenient spot on frame tubing using U-bolts.*

<b>Smallaire Heat Exchanger complete kit for JD 1910 TBH &amp; TBT cart</b>	<b>\$4195.00</b>
<b>'Remote mount' for other carts*</b>	<b>\$2475.00</b>

*\*includes steel ring to attach ducting to fan, and 10" hose clamps (no hoses, ducting, or bracket/stand)  
Hoses and ducting are available for purchase separately*





## SeedVU Air Drill Venting Unit

Is plugging your air drill's primary lines a constant worry?

Problems with seed bouncing or blowing out of the furrow?

A simple solution—installs in just a couple minutes for the entire drill (fits on top of distribution head. No modifications needed).

SeedVU® gives you the peace of mind of running your fan where it should be, and not worrying about seed blowing out of the furrow, all while monitoring for primary-line blockages.

The SeedVU® takes unwanted, excess primary-line air pressure and separates it from the seed and fertilizer stream, right where you need it to: the distribution head. This allows seed and fertilizer to travel to the openers by gravity, or assisted by an adjustable volume of air. It's up to you!

"I love the SeedVUs. If you've ever plugged a primary, it takes 2 hours to clean it out. That's a lot of downtime, and costs us money. With the SeedVUs, I can crank the fan speed up and never worry about plugging a primary, and actually do a better job of seed placement by dumping most of the air with the SeedVU."



Tom Cannon, Blackwell, OK  
Exapta customer since '03 (SeedVUs on JD 1890)



### SeedVU for air drills

**\$260.00 – 305.00**

*fits late-model JD (rubbery heads/'pods'); Case-IH / New-Holland Flexi-coil EZ Flow heads; Seed Hawk; Salford; Seed Master & other drills updated to Smallaire heads. See p 21 for details.*

## Smallaire riser pipes & conversion heads



Smallaire riser pipes have an enlarged elbow to properly disperse product going up to the distribution head (ordinary mandrel bends cause ricochet and overload one side of the head). Dimples also help this. Tremendous durability. Smallaire are the wizards of air flow. Reap the rewards of a uniform amount of product going to each opener.

For best results, also get rid of inferior distribution heads, such as the Deere steel-lid heads. See p 21 for Smallaire & SeedVU products: Exapta is proud to be the exclusive distributor for their ag products in North America.



"I didn't think the [Smallaire distribution] head was going to be anything special, but **they ended all of our plugging problems and we backed the fan speed off another 200 RPM.** Never had a secondary hose come off, either. We got the [Smallaire] stainless risers from you, and they're an undervalued product. Great product, and I will buy again [for my other air drill]. Thanks!"

Jamie Kouba, Regent, ND • Exapta customer since 2016  
(Smallaire manifolds & riser pipes on 60-ft SeedMaster air drill)

Smallaire riser pipe

2.5-inch (black) (Stainless \$138)

**\$119.00**

Smallaire conversion head

7 outlets

**\$225.00**

8 outlets (other outlet numbers available)

**\$250.00**

# Primary & Secondary Hoses for Air Drills

- 2x – 3x wear life of OEM & competitor primary hoses
- Urethane lining: longest-lasting hose on the market
- UV protection for extended wear life—no cracking
- Clear spirals, see when product is flowing or plugged!



Our primary hoses are the best on the market, lasting 2x – 3x longer than any other hose during internal sandblast testing. Constructed with a urethane lining in place of the ‘blended’ materials used by OEM & competitor hoses. UV protection to withstand sunlight decay. Transparent black, see-through spirals in material allows you to detect/locate blockages immediately.

Our secondary hosing is made from PVC blended with polyurethane for up to 2x the wear life of OEM. UV protection for longer wear life in the field. Plus, our secondary hose is the same clear black as Primary Hose, allowing you to see when product is flowing or locate a blockage.

“I installed the Primary and Secondary Hoses from Exapta before fall seeding this year. I am impressed with the quality. Just by the looks of it (black spirals), I am confident the abrasion of inside product and also the outside wear (by hoses rubbing against other hoses and frame) will hold-up better than OEM.” [2020 update] “I covered 9-10K acres with the hoses and didn’t see much wear, if any wear. Comparing to the OEM hoses that are on their second season and I think I used an entire roll of duck tape just to finish my sorghum!”



Caleb Nine, Lavern, OK  
Exapta customer since 2018

<b>Primary Hose</b> (sold in 100ft rolls)	<b>\$680.00</b> (6.80/ft)	<b>NEW</b>
<i>2x – 3x wear life of OEM and competitors. Urethane lining for longest-lasting hose on the market.</i>		
<b>Secondary Hose</b> (sold in 100ft rolls)	<b>\$250.00</b> (2.50/ft)	
<i>Up to 2x wear life of OEM. Transparent black spirals—see when product is flowing or plugged.</i>		

## Weights & Brackets for JD 50/60/90 air drills



- Have extra ballast ready when you need it
- Ideal location on frame (over rear transport wheels)
- Easy installation
- Virtually eliminates bolt breakage at this spot

We’ve long been advocates of placing additional ballast over the rear transport wheels on the JD 1850/60/90 air drills, as it’s the best location to offset the leveraging from the rockshaft torque on the openers. Our brackets are for the wing transport wheels on 3-section drills, where those wheel frames are attached with bolts (see photo). Holds up to 12 JD suitcase weights per bracket. *For air cart drills only, not compatible with CCS.*

<b>Weight Brackets for JD 50/60/90 air drills</b>	<i>all hardware included</i>	<b>\$1680.00</b>	<b>NEW</b>
<b>Weights</b>	<i>Free shipping for 10 or more</i>	<b>\$90.00 ea</b>	



# IntelligentAg Wireless Blockage & Flow Monitor

Be proactive — catch drill problems while they're happening! If you've ever been sickened to find out your drill wasn't seeding or fertilizing for part of each swath across a field, or the entire season, you know firsthand why monitoring product flow is so important.

On air drills, the OEM pin-style or optic sensors only tell you if something is flowing past, not whether it's full flow or not. Using *acoustics*, Intelligent Ag's sensor system tells you the rate each primary is getting (as a % of full-flow), so you know right away if either fertilizer or seed stop flowing, or are flowing intermittently, or at a partial rate (except when one product rate is tiny compared to the other product rate). **No more skips!**

The system works on box drills too, many of which have no flow sensors at all.

The sensors are quite durable, many of which are still going after 180,000 acres.



**1.** As the seed leaves the manifold, it passes through the acoustic sensor.



**2.** The seed impacts a stainless steel membrane, creating a small pulse of sound that travels out through an auditory tube.



**3.** Information arrives via WiFi and is displayed on an Apple iPad. Red = blocked secondary. Orange = primary has flow above or below parameters you set.

**"This system paid for itself within the first day.** My seed had a blockage at the air cart that fed two secondary towers, while fertilizer was still passing thru. Half my drill was not seeding. With the OEM sensors, I wouldn't have known there was a problem because it could not distinguish seed and fertilizer. With Intelligent Ag, I instantly knew something wasn't right. I saved thousands of dollars, not to mention my time of re-seeding!"



Circle C Ranch, Lance Coker, Shawnee, OK • Exapta customer since 2018 (JD 1890 30ft on 7.5")



**"It saved me this year when I had a fertilizer blockage issue.** My old system wouldn't have told me there was a problem because I was still putting on seed."

Micah Tice, Beloit, KS • Exapta customer since 2016 (Intelligent Ag blockage system on 42' JD 1890)

## 0% Financing for 12 months available

(1/3 down, 1/3 in 6 months, final 1/3 at 12 months)



**Intelligent Ag monitoring system (iPad not included)**

**for 48-rows, 6 primaries, TBH cart      \$7,965.00**  
**\*TBT cart, add \$50.**

*Any number of rows up to 156 is possible, and 20 primaries.  
Not compatible with Box Drills..*

# Shop for Exapta products online



**Aricks firming arm kit** **\$42.00**  
(sleeve, bushings, seals) JD 50\*/60/90

*\*50-series requires arm modification. Doesn't fit earliest 750s.*



**Aricks closing arm kit** **\$42.00**  
(sleeve, bushings, seals) JD 50/60/90 (Doesn't fit earliest 750s).

*See p 14 for install and removal tools; special washer and nut.*

**Aricks main opener pin kit** **\$36.00**  
(pin, bushings) fits all 50/60/90/Pro-series. *See p 14 for bushing removal tool.*



**In-cab adjustment of hydraulic down-pressure**  
for UniForce (on any JD 50/60/90/Pro) **\$650.00 – \$890.00**

JD box drills & 3-section\* air drills (w/o UniForce) **\$890.00**

*For Deere drills (OEM downforce, except John Deere 5-section air drills), 2510H (OEM downforce), or UniForce. Includes wiring and switch.*



**Forges de Niaux 200 blade for JD 50/60/90/Pro drills** **\$34.87**  
*J.5070. Even stronger with 20 – 30% more wear-life.*

**Forges de Niaux 200 blade for CIH P-500/NH2080** **\$33.17**

**Ingersoll-Canada opener blade, JD 50/60/90/Pro drills** **\$28.00**  
*All are same dimensions as OEM. See p 5 for more info.*

**NEW**

**CLOSE OUT**



**Leaf Spring for seed boot on JD 50/60/90 drills** **\$5.25**

*Manufactured to Exapta's high-quality specs for longer service life (less breakage, maintains strength). Ultra-durable paint process prevents rust. Plus a splotch of blue for visibility. Replaces N284055 & N280485. See p 6.*

**Coil Spring for CIH P500/NH2080** **\$5.81**  
*20% stronger. Reduces boot/scraper plugging.*



**Aricks shoulder bolts for JD 60/90 seed-boot repair** **\$12.00**

*Clamps tight against shank ears; boot swivels on bolt. Eliminates slop in boot attachment for better seed placement. Requires drilling out existing boot mounting holes. See p 6.*

**NEW**



**Ninja™ flexible seed-bounce flap, JD 50 & 90 drill boots** **\$5.68**

*Unique forward bend to put more seeds in the bottom of the furrow. Incredible wear life; doesn't break off like OEM and aftermarket flaps. Fits Standard and Extended Wear boots. At least 5x wear life vs others. See p 7.*



**DuraLok™ seed-lock wheel** **\$55.00**

*Fits JD 50/60/90/Pro-series drills and Case's SDX. Narrow, sleek hub to shed mud better than OEM & aftermarket firming wheels w/ wide brgs/hubs. DuraLok™ is much like the SDX firming wheel, but narrower, less than half the price, and with a replaceable bearing! Wheel dimensions are 0.45" x 9" — the narrowest on the market because that's what fits the furrow the best. See p 8 for details. [Now with same Peer bearing as JD 90-series.](#)*



**Keeton for grain drills** **\$27.50 - 35.50**

*Modern 2-piece design with replaceable tail. Various bracket models to fit most Sunflower, Great Plains, Crustbuster, Tye, Marliss, and other drills. Also fits Case Precision 500 using special Exapta bracket (see below). Also fits GP twin-row planters. Mojoes highly recommended—use our milled version of tail.*



**Mojo Wire for drill Keeton** **\$13.00**

*# K.608. Fits 2-piece drill Keetons that have milled tops by Exapta. For Case P-500/NH 2080, other drills, GP twin-row planters.*



**Steel bracket, Keeton on Case P-500/NH 2080 drill** **\$10.75**  
*#C.101L/R. (each)*



# Shop for Exapta products online

For these items *and more*, visit [www.exapta.com](http://www.exapta.com).

  <b>Better than Ever!</b>	<div><b>Thompson wheel T4z</b> <b>\$83.00</b></div> <div><i>With stub shaft, for JD 60/90/Pro-series drills. 'Z'-series is made from military-grade armor plating, for even longer wear life than our previous x-series. For more info, see pp 9 &amp; 13.</i></div> <div><b>Thompson wheel T2z &amp; T3z</b> <b>\$136.00</b></div> <div><i>(mount on 5/8" bolt or metric spindle, for JD 50-series, Case SDX &amp; CIH P500/NH2080 drills)</i></div>
	<div><b>Bracket kit for T-wheels, Case P-500/NH 2080 drill</b> <b>\$78.00</b></div> <div><i>#C.201L/R. Bracket to hold Thompson wheels at correct position &amp; angle (creates 7° toe-out) to replace packer wheel. For use only in conjunction with Keetons (see p 13), since the T-wheel does no packing. Also included is a lighter torsion spring for the closing arm. <b>The only closing option for these drills that allows full-length liquid Keetons to be used.</b></i></div>
	<div><b>Aricks row cleaner for JD 50/60/90/Pro-series drills</b> <b>\$525.00</b></div> <div><i>Note: Box drills require installation of a bar ahead of each rockshaft (call us for prints &amp; weld-on pieces available to build your own) See p 10 for info. <b>Note: 10-week delivery time (North America)</b></i></div> <div><b>Lower price</b></div>
	<div><b>SeedVU for late-model air drills</b> <b>\$260.00 – \$305.00</b></div> <div><i>Adjustable air diffuser/venting unit. Easy, fast installation (no modifications needed). Fits late model JD outlet heads with twist on lid, late model Case/ NH heads, Smalldre conversion heads and more. (Does not fit JD flat top heads with J bolts. Consider updating those to the Smalldre heads) See p 17 for details.</i></div>
	<div><b>Smalldre conversion heads</b> <b>\$219-319.00</b></div> <div><i>Available from 3-16 outlets. Smart upgrade for older JD with J bolt heads. Unique curved design evenly distributes seed to Secondary outlets (no flat spots for seed to deadhead against). Compatible with SeedVU. Zinc plated and powder coated paint.</i></div>
	<div><b>Smalldre riser pipe</b> <b>2.5-inch</b> <b>\$119.00</b></div> <div><i>Also available in stainless steel, \$138.00. Other sizes available. If you need taller pipes to improve gravity flow thru the secondaries, or just looking to replace rusted-out pipes or older pipes that lack dimples &amp; enlarged elbows to distribute seed &amp; fertilizer more uniformly as it goes up into head.</i></div>
 <b>NEW</b>	<div><b>Primary Hose (sold in 100ft rolls)</b> <b>\$680.00 (6.80/ft)</b></div> <div><i>2x – 3x wear life of OEM &amp; competitors. Transparent black spirals.</i></div> <div><b>Secondary Hose (sold in 100ft rolls)</b> <b>\$250.00 (2.50/ft)</b></div> <div><i>Up to 2x wear life of OEM. Transparent black spirals. See p 18 for more info.</i></div>
 <b>NEW</b>	<div><b>Weight brackets for JD 50/60/90 air drills</b> <b>\$1680.00</b></div> <div><i>Pair of brackets for wings. Hardware included. (Doesn't include weights, nor shipping.) Holds up to 12 JD suitcase weights per bracket. For air cart drills only, not compatible with CCS. We also can get weights for you —\$90/ea.</i></div>
 <b>NEW</b>	<div><b>Aricks seed boot for JD 90-series drills</b> <b>\$125.00</b></div> <div><i>(also fits 60-series if seed tubes are updated) uses the same high-chrome alloy that JD uses in their Extended Wear boots. Uses a unique shoulder-bolt to eliminate the problematic slop in the attachment holes—this is the best fix available. The ultra-high-quality you've come to expect from Aricks of Australia. (includes shoulder bolt) See p 6 for details. <b>Note: 10-week delivery time (North America)</b></i></div>

# Educational Products

Confused yet? Not sure where to start?  
Feeling intimidated? Relax, we can help.  
From thousands of hours spent methodically  
adjusting and examining seed placement,  
Exapta has created the **No-till Seed Explained™**  
**DVD** to help you along each step of the way.  
Our **Seeding School Videos** are available for  
additional learning.

We encourage you to **keep in mind Steps 1 – 4** (p 3) for the most effective no-till stand establishment. We encourage a systems approach, not all that different from the drivetrain on a truck or tractor. Which piece can be neglected? None. If you only replace the tires on the truck, but don't take care of the engine, you will have a lot of issues. **Exapta products complement each other, giving you the advantage of the System.** One part may not give you all the results you are hoping for. While the components of a truck or tractor were engineered to work together across a range of conditions, your seeding equipment was designed for *tilled* seedbeds. Which is why there is a need for modifications.

More questions? Instructions for all of our products can be found on our website. Or give us a call! Our knowledgeable crew serves up only straight answers, and **can walk you through which items to tackle first**—even if it's not our product. Our mission is to make sure you have the equipment and know-how for ultimate success in no-till seeding on your farm. For further reading, [check out our free newsletters at \*\*exapta.com/newsletters\*\*](#).



“Great products that are field-tested, and knowledgeable support.”

Steve Groff,  
Cedar Meadow Farm,  
Holtwood, PA  
Exapta customer since '05



“I was the only one able to plant this year because of your theories: Remove the coulter, use the Valion—with a wider seed trench and using the Keeton plus Mojo Wire for seed firming. Everyone else using coulters created a huge mud mess.”

Scott Lambert, Trempealeau, WI  
Exapta customer since 2013

“The DVD was also money well spent. It helped us a lot to understand the importance of getting the planter and drill set up correctly. You guys provide great products & service.”

James Snellen, Hodgenville, KY  
Exapta customer since 2014

**New! 3-yr compilation of stand counts x row from Seeding Schools available at [exapta.com/ssresults](#). See how closing wheels and other attachments affect stands & root growth!**

<b>2018 No-till Seeding School Video</b>	<b>\$85.00</b>
<b>2019 &amp; 2018 No-till Seeding School Video</b>	<b>\$115.00</b>
<b>2019, 2018 &amp; 2016 No-till Seeding School Videos</b>	<b>\$145.00</b>

**SEEDING  
SCHOOL**

*For those who missed out on the school, here's the full 4-hour video. Learn simple, easy adjustments that often provide enormous improvement. An array of adjustments & attachments on planters & drills shown in action. Inspection of corn stands planted a couple weeks prior with the same configurations. Clear explanation of the interactions amongst the components of planters & drills. Suggested: Watch/review our No-till Seeding Explained DVD first.*

# No-till Seeding Explained™ DVD

- Discussion of what the components & attachments should be doing (or not)
- Fertilizer drill or planter: Where, why, how, & trade-offs
- 'Preparing' the seedbed at harvest of previous crop
- Carefully chosen photos, diagrams, & video clips
- Printed troubleshooting guide for in-field use
- No sales pitches, purely educational



Narrated by the calm, reassuring voice of Ken Root, from a carefully honed script by Matt Hagny, this DVD is aimed at nurturing your understanding of the seed-installation process. We have tried in the utmost to be truthful and objective, and to deliver highly useful insights and tips. We sincerely want no-tillers to succeed, whether they buy any hardware from Exapta or not. (Our products are mentioned very briefly among a wider discussion of aftermarket suppliers & products.) Detailed narrative & visuals to guide you through everything from off-season overhauls of your planter & drill, to exact step-by-step adjustments in the field. Actual footage of Matt Hagny excavating seeds in furrows (both planters & drills); discussion of what good seed placement looks like, and why. Troubleshooting. Maintenance tips. Aftermarket upgrades. Seed vigor. Root growth. How uniform timing of emergence far outweighs uniform spacing for yield influence. For highly effective no-till seeding, this DVD has it covered.

## No-till Seeding Explained™ DVD

**\$65.00**

*While we cover no-till seeding in the broadest possible terms, specific recommendations given will apply primarily to the JD/Kinze/White planter design, and to the Deere 50/60/90-series single-disc gauge-wheel drills. Case SDX & Case Precision 500 / NH 2080 gauge-wheel drills are also discussed. (Once you see the explanation of the discrete actions required for proper no-till seed placement, you'll understand why we focus on certain models as being the top choices for no-till seeding in North America. Even if you do not yet own these seeder models, you will benefit from understanding no-till seeding better as explained in this comprehensive DVD.) Includes printed 10-step guide.*



## About the Matt Hagny No-Till Scholarship Foundation

### Accepting Applications now through September 30th!

Our mission is to provide experiences and learning opportunities to those interested in traveling to further their education about no-till farming practices. We see the world as bigger than us. We seek to follow Matt Hagny's example, as he was a life-long learner, and a challenger of majority thinking, processes and practices. We strive to assist others on their journey of learning and growing. We recognize the value found in the combination of travel and study.

The Matt Hagny No-Till Scholarship Foundation, together with a matching donation from Exapta Solutions, Inc. will award a scholar every year with \$1,000 to cover travel and expenses as related to No-till Farming and Agronomy research.

**For more information on the application process, or to make a donation, visit**

**[www.exapta.com/matt-hagny-scholarship](http://www.exapta.com/matt-hagny-scholarship)**



*The Matt Hagny No-Till Scholarship Foundation is an endowed fund managed by the Greater Salina Community Foundation, a qualified section 501(c)(3) organization.*

PRST STD  
US POSTAGE  
**PAID**  
DENVER, CO  
PERMIT NO. 631



US Patents Pending, US Patent No 9,930,822

## UniForce Hydraulic Down-pressure system

See pp 14 - 15.

Exapta is selective about the products we offer. We don't aim to be a complete supply house for everything under the sun. We choose to solve significant problems that no one else is addressing adequately.

## Ninja seed flaps for JD 50 & 90 boots

US Patent No 9,668,402

See p 7.

Unique forward bend for fewer misplaced seeds. 5x wear life vs others. Flexible & will not break. **Our customers love these!**



## Forges de Niaux 200 blade

**NEW**



For John Deere 50/60/90/Pro-series & Case P-500 drills

Deeper bevel and 20 – 30% more wear-life. See p 5.



## Aricks row cleaners for JD 50/60/90 & Pro drills

- Dramatically reduced hairpinning
- Minimal soil disturbance
- More consistent seed placement
- Great for shallow seeding or heavy mulch



See p 10 for details.

**Aricks Australia drops prices!**

## Primary & Secondary Hoses for air drills

- **2x – 3x wear life of OEM & competitor primary hoses**
- Urethane lining: longest-lasting hose on the market
- UV protection for extended wear life—no cracking
- Clear spirals, see when product is flowing/plugged!



See p 18.

## JD 50/60/90 firming & closing bushing kits. Main pin bushing kits.

No more greasing!

After 8 years & 20,000 acres: "They [the Aricks firming & closing bushing kits] were good the whole way through. I never had any problems with them at all. I would recommend them to anyone."



Ed Whitechurch, Temora, NSW, Australia (30' JD 1890)

**Hugely popular in Australia!**  
See p 11.

**Call today: 785-820-8000** (Mon-Fri 8AM-5PM CST)

**Order online: [exapta.com](http://exapta.com)**

**Questions? Give us a shout. We serve up only straight answers.**

